

PLAKA - FORMLINER

Formliner for concrete structures

REF 04.16.01 - Version V01 - 26/08/2020

**INSTALLATION OF THE FORMLINER ON HORIZONTAL FORMWORK PANELS**

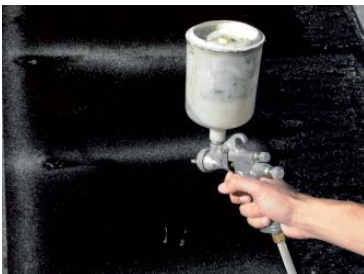
Enforcement in horizontal formworks with the FORMLINER is carried out in accordance to the following steps :

Step 1

Prior to placement of the FORMLINER, the absence of dust, grease, paint, loose material, etc., has to be checked, in order to prevent the non- adhesion of the glue (product code reference : TUBVALCOLLE).

Step 2

Presentation of the FORMLINER on the formwork panels.

Step 3

Fixation of the FORMLINER to the formwork will be made with the adapted glue, with reference TUBVALCOLLE.

The glue will be applied throughout the perimeter of the formliner and in strips every 20 cm, and over the entire surface of the formwork panel which will be covered by the FORMLINER.

PLAKA - FORMLINER

Formliner for concrete structures

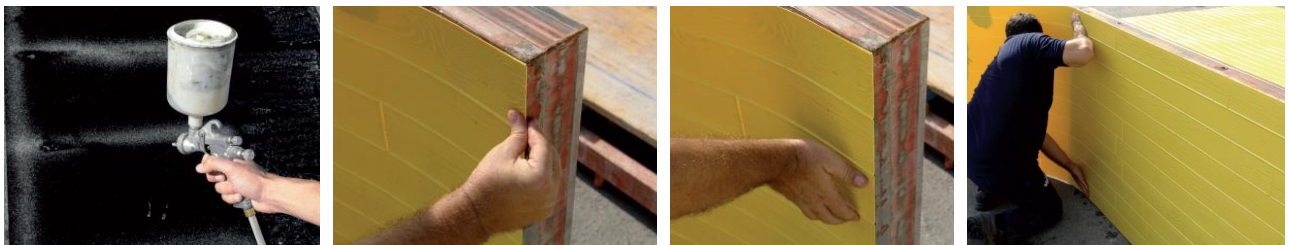
REF 04.16.01 - Version V01 - 26/08/2020

**INSTALLATION OF THE FORMLINER ON VERTICAL FORMWORK PANELS**

Enforcement in vertical formwork with FORMLINER is carried out in accordance with the following steps :

Step 1

Prior to placement of the FORMLINER, you need to check the absence of dust, grease, paint, loose material, etc., which can prevent adhesion of the Valero glue.

Step 2

The glue is applied on the perimeter of the FORMLINER and on its surface every 20 cm.
Wait 2 minutes and install the FORMLINER onto the formwork, while exerting a pressure with the hand.

JUNCTION BETWEEN SHEETS

The way a junction has to be done between sheets depends on the texture of the chosen model.

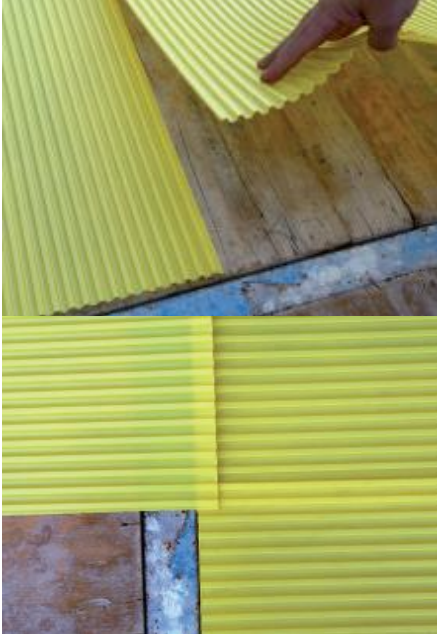
MODELS 006, 021, 023 AND 024.

The junction for these models is performed by overlaying 2 formliners of about 2 cm (depending on the model), and following the design of the texture. Make sure there is no fold in the sheet or that the texture of the 2 sheets fits perfectly.

PLAKA - FORMLINER

Formliner for concrete structures

REF 04.16.01 - Version V01 - 26/08/2020



©Copyright protected

This sheet, written with great care, supersedes all previous versions. The technical information on the design, models, illustrations, design values and specifications are believed to be accurate. We make no warranties (expressed or implied) as to its accuracy and assumes no liability in connection with non suitable use of this product. We reserve the right to modify the contents of this form without prior notice.

PLAKA - FORMLINER

Formliner for concrete structures

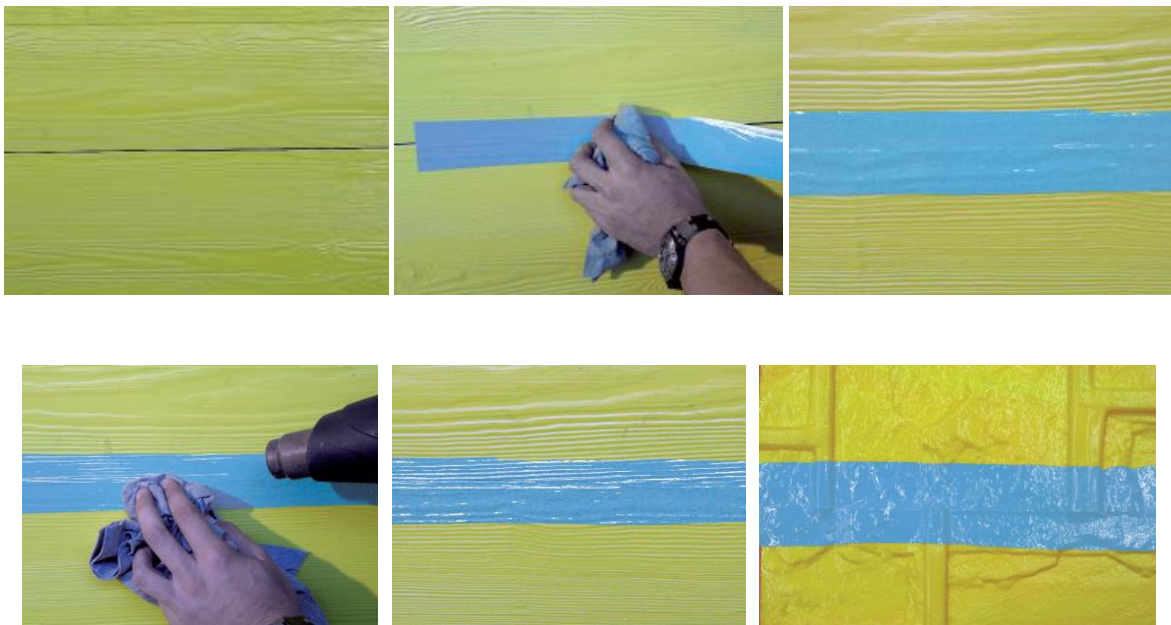
REF 04.16.01 - Version V01 - 26/08/2020

**OTHER MODELS:**

The junction for these models is performed by jointing the profiles end to end, making sure there is no fold remaining in the sheet.

**SEALING**

To seal the junctions between the formliners, we recommend the use of "LHV tape" along the edges of all the FORMLINERS. These have to be subsequently heated by mean of an industrial dryer, while exerting a pressure by mean of a cloth, so that the tapes get the final texture of the FORMLINER.



©Copyright protected

This sheet, written with great care, supersedes all previous versions. The technical information on the design, models, illustrations, design values and specifications are believed to be accurate. We make no warranties (expressed or implied) as to its accuracy and assumes no liability in connection with non suitable use of this product. We reserve the right to modify the contents of this form without prior notice.

PLAKA-SOLUTIONS.COM

For further information, please contact your Leviat office.

Belgium : info.plaka.be@leviat.com / + 32 (0) 2 582 29 45France : info.plaka.fr@leviat.com / +33 (0) 5 34 25 54 82

PLAKA - FORMLINER

Formliner for concrete structures

REF 04.16.01 - Version V01 - 26/08/2020

**PROCESSING GUIDELINE**

- We recommend the use of glue with reference TUBVALCOLLE to fix the FORMLINER onto any type of formwork support.
- Cannot be exposed to the sun light for long periods of time.
- The FORMLINER does not guarantee flatness; the flatness will depend on the type of formwork used. Therefore we recommend the use of formwork panels in perfect state. During the installation, we advise to minimize the quantity and the length of joints.
- Do not use release agents as they may damage the formliners and compromise the finish of the concrete. FORMLINER can be easily removed from the concrete. Soapy water can be used to clean the formliners.

Dimensional stability

The dimension of the FORMLINER can vary of maximum 1mm per linear meter per 10 degrees of temperature variation.

TOLERANCE ON THE DIMENSIONS

- Length : +/-2mm
- Width : +/-2mm